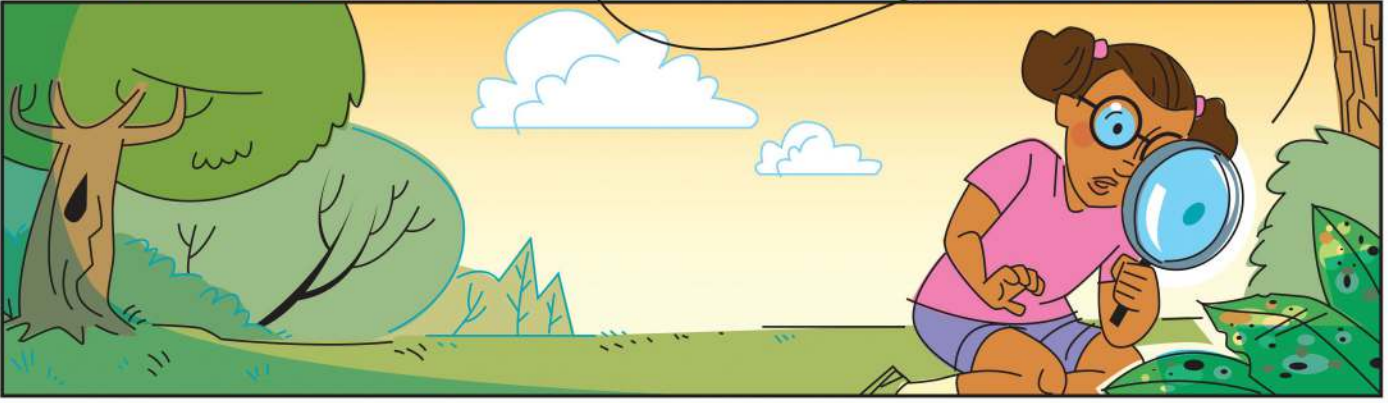
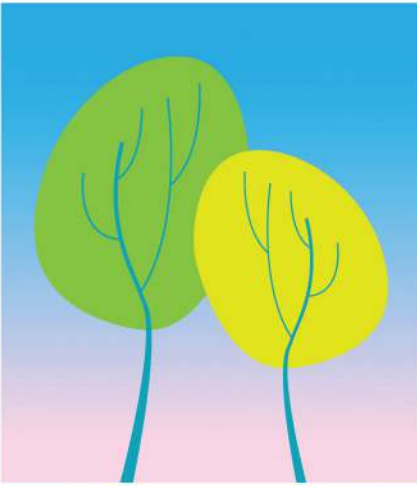
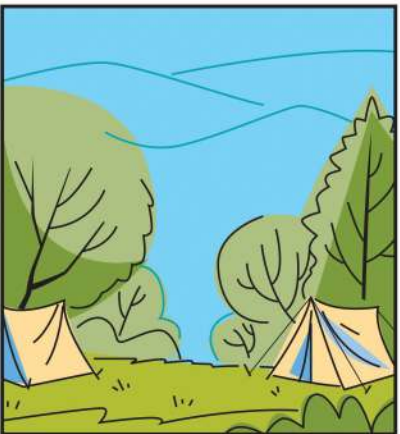


The Redbay Ambrosia Beetle Bust



Laura grew up on the Georgia coast, so she was very familiar with the symptoms of laurel wilt decline and mortality in redbay, *Persea borbonia*. When she finished high school, she decided to study this problem at the University of Georgia.



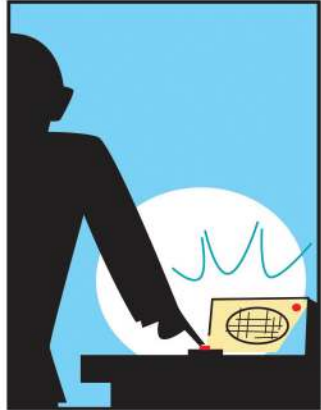
While on a camping trip with some college friends in nearby Oconee National Forest, she observed some sawdust-like threads coming out of the bark of a redbay and knew that it could be symptoms of the disease.





Concerned
and ever
curious...

Laura asked her teacher back at school about what she saw. Her teacher said that it might be the first documented case of laurel wilt in that part of the state. She put Laura in touch with their state's pest survey coordinator...



...who alerted the Plant Heroes team about the problem. They helped Laura put up redbay ambrosia beetle traps and lead a survey throughout the park.

