

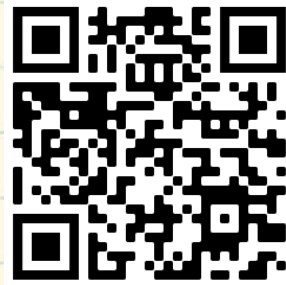
WE NEED YOUR HELP!



We are glad to provide these materials for free. In order for us to continue receiving funding for new materials, we need to collect information on how they are used.

Thank you for taking the time to answer the following one-minute survey.

There are three ways to complete the survey:



- 1** Scan this code with your smartphone camera
- 2** Type the following link into your web browser:
<https://plantheroes.org/educator-survey>
- 3** Email your answers to:
plantheroes@publicgardens.org



- 1) Job title
- 2) Name of organization you belong to
- 3) What kind of educator are you?
 - Teacher
 - Summer camp counselor
 - Home schooler
 - Public garden educator
 - Informal educator
 - Other (please describe)
- 4) What grade level do you teach?
 - Elementary (K-5)
 - Middle School (6-8)
 - High School (9-12)
 - Other (please describe)
- 5) Specify what subject area you teach:
 - Science
 - Math
 - Language Arts
 - Social Studies
 - Other (please describe)
- 6) How many students do you teach in a school year?

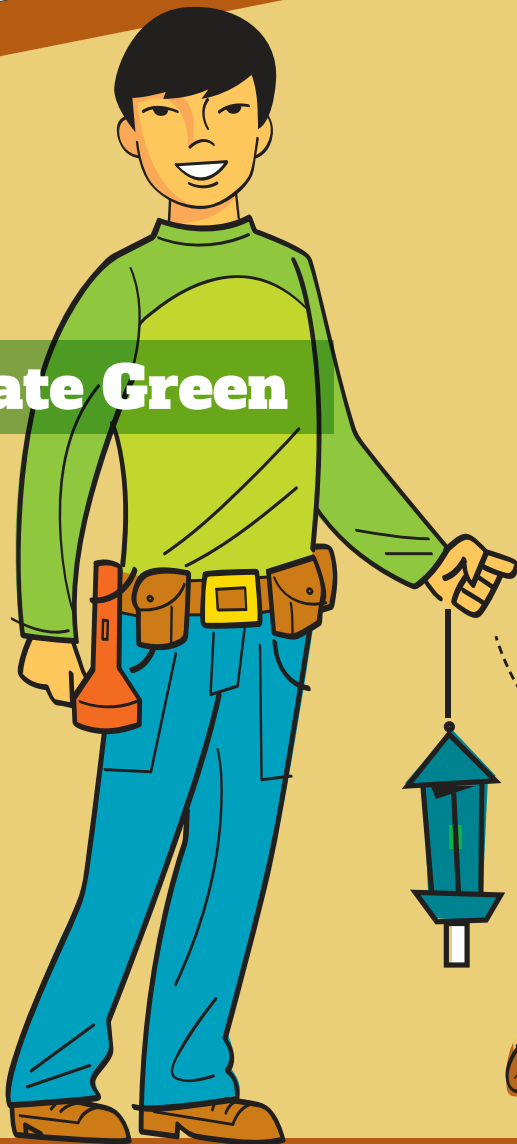


Help the Plant Heroes protect our forests
by slowing the spread of pests and diseases!

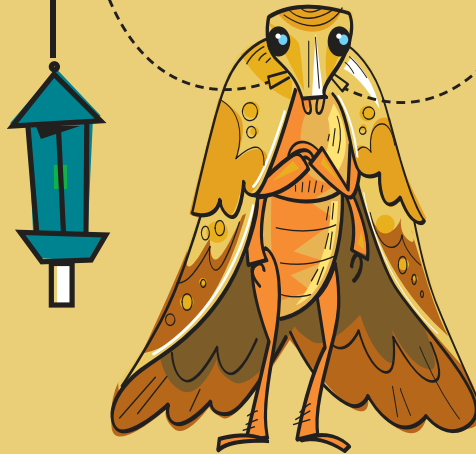
INSECT LIGHT BROWN APPLE MOTH

PLANTHEROES.ORG
BEGINNER
ACTIVITY
BOOK

Nate Green



BE A PLANT HERO!
Help Nate slow
the spread of the
Light Brown
Apple Moth!

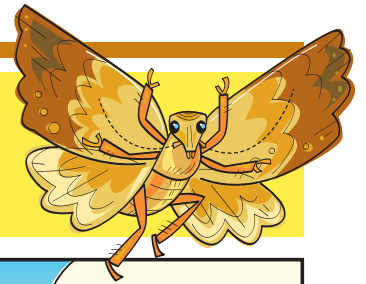


Plant
Protection
Program

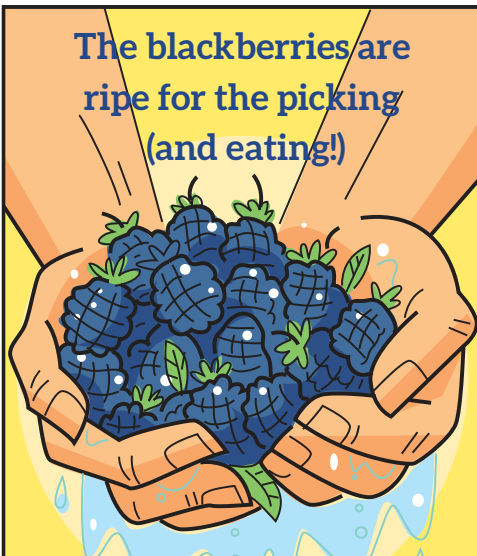
AMERICAN PUBLIC GARDENS ASSOCIATION

IN A JAM WITH LBAM!

A.K.A. LIGHT BROWN APPLE MOTH



It's harvest time in California, and Nate sets out to visit his older cousin Sammy who, with his father, owns and operates a blackberry farm in the Napa Valley.



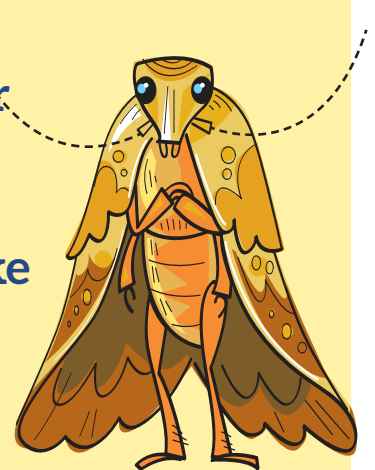
The blackberries are ripe for the picking (and eating!)

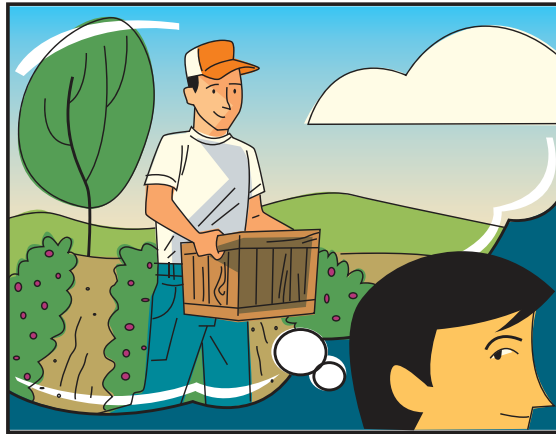
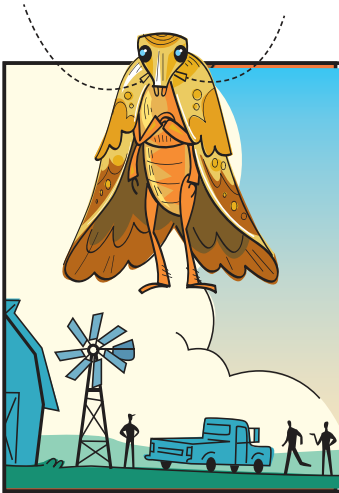


Nate and Sammy decide to haul the berries to a local market for sale! With tourist season in full swing, these California blackberries are sure to go quickly and provide a good bit of pocket money as well.



As they're leaving for market the next day, Nate says, "Is it just me or does it seem like there are more crates than yesterday?"





Sammy explains that his dad got up extra early to pick a few crates from their other patch across the street.

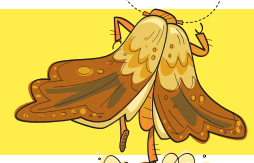


Nate has a flashback of the inspector visiting the day before and cries out, "WAIT! You mean AFTER the inspector was here?" We can't be sure that they're not infested with light brown apple moth and we shouldn't bring them to the Lake County Market because the area is practically moth free!

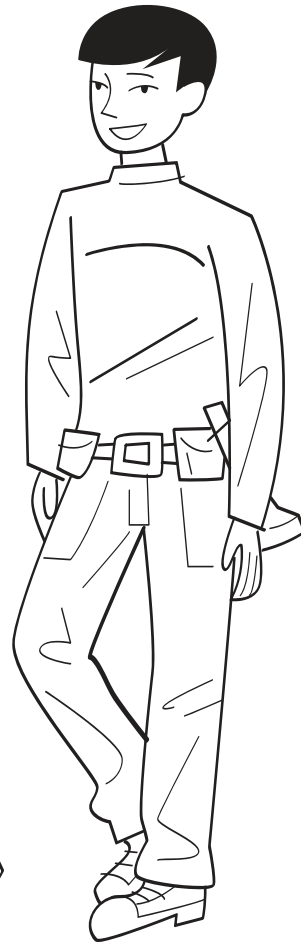
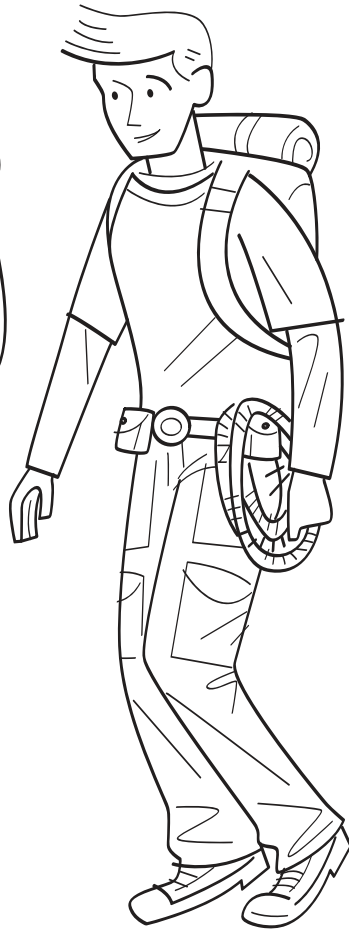
Nate and Sammy decide that the only way to get themselves out of a potential jam by spreading light brown apple moth is to well, make jam!



The boys were delayed a day, but at the market, music is in the air, everyone is cheery by far, and there is money to be made with fresh blackberries in a jar!



PLANT HEROES



Name _____



Date _____

**HOST
ROLL
FRUIT**

**HOLES
MOTH
ORCHARD**

**GRAPES
STRAWBERRY
APPLE**

M I Q h t U o **M o t h** P S

P Z H o s t U H o t L H t

S t r a w b e r r y r t V

C F r u i t U t t B G M i

a T r O O r c h a r d M r

o G V R o l l Y E N X o l

s H X o s H S V H o l e s

e I p Z l A p p l e p X P

e L I G r a p e s Y p p e

Name _____



Date _____

Find and circle the following words:

WINGS
SILK

NURSERY
TRAP

CITRUS
NEST

Complete the maze, and then find the words. The words can only be found along your maze path.

```

AXTRAPTIVGIDQRWINGSQYRAFGUBLUWNLHQQVQWVVR
L                                                    W
N                                                    I
M                                                    I
X                                                    E
S                JCITRUSNESTUDXRF                FBEYRRNDLMA                O
G                Y                W                F                D
U                I                K                O                V
D                M                K                X                C
P                K                P                F                F
W                O                N                I                G                DXSILKESJPU                A
START ▶                Q                I                N                Q                U                Q                Y
                E                H                N                H                P                W                R
                S                Y                U                E                P                D                E
                J                J                R                B                U                P                P
                TDIGKH                S                EQQJSK                E                JEGCKJ
                N                E                S
                E                R                V
                K                Y                T
                H                X                A
                PVKNYYHYKLSWNNPEJTMYGGMTQXOSBTJMJSAPHLTCU

```



Name _____

Date _____

Oh, no! The letters from 12 words have been curved and hidden in the puzzle. A curved word may start anywhere in the puzzle. It can then move in any direction. Once a word has used a square in the puzzle, that word may not re-use the same square. But another word is allowed to re-use squares from other words. One word has already been found for you! Find each of the following words.

ORCHARD
APPLE

WINGS
STRAWBERRY

SILK
NURSERY

MOTH
CITRUS

TRAP

U	W	H	B	S	R	U	N	I	Y
Y	T	I	C	E	W	K	E	R	W
O	R	T	G	R	S	G	N	I	K
Y	M	R	K	Y	O	M	M	D	L
A	H	U	E	L	S	L	Y	R	S
H	I	S	A	B	I	T	R	A	H
Y	I	P	G	O	W	G	G	H	D
W	B	C	E	R	G	A	N	C	O
P	P	L	E	A	T	M	R	R	E
A	P	P	H	P	A	C	S	T	K



GAMES!

Learn more and test your knowledge with interactive games on plantheroes.org

© 2015 American Public Gardens Association

PLANT HEROES





Name _____

Date _____

Oh, no! The letters from 9 words have been curved and hidden in the puzzle. A curved word may start anywhere in the puzzle. It can then move in any direction. Once a word has used a square in the puzzle, that word may not re-use the same square. But another word is allowed to re-use squares from other words. One word has already been found for you! Find each of the following words.

BLACKBERRY
ANTENNAE
BOTRYTIS

LARVAE
DAMAGE

ORNAMENTAL
PESTICIDE

NATIVE
PUPATE

T	L	P	A	E	A	P	U	P	A
P	A	K	Y	I	T	C	E	B	S
E	T	I	C	I	D	E	Z	L	K
S	N	Y	R	R	E	B	K	C	A
E	E	N	U	G	S	T	I	V	E
T	M	D	A	I	E	N	A	Y	Q
N	A	C	T	E	B	G	N	R	D
A	N	Y	N	G	O	V	A	A	D
O	R	R	T	A	V	R	A	M	Y
T	B	O	S	E	Y	N	L	M	Q



GAMES!

Learn more and test your knowledge with interactive games on plantheroes.org

© 2015 American Public Gardens Association

PLANT HEROES



Plant Heroes Pledge

This Certifies That

is an Official Member of the Plant Heroes Team and pledges to:

**Learn about the
pests and diseases
that affect the
plants in my region**

**Be on the lookout
for symptoms of
pests and diseases
on trees in my
neighborhood**

**Report any suspicious
findings to an adult
who can notify the
local extension agent**

**Refrain from
moving firewood**

Awarded by the
American Public
Gardens Association





Join our team of Plant Heroes and learn about trees, forests, and the natural world around you!

PLANTHEROES.ORG

You can be a Plant Hero!

Are you curious about plants and animals? Do you like asking questions about nature? Do you enjoy being outdoors and having fun, climbing trees, balancing on logs, or finding a new butterfly or beetle? If so, you are already on your way to becoming a Plant Hero! We invite you to join forces with Nate, Laura, Aponi, and Frankie to protect the plants and ecosystems we all love.

How can you become a Plant Hero?

Join our team and go on a journey with Nate, Aponi, Laura, and Frankie. As a Plant Hero, you will learn to notice when plants are in trouble. You will also find out ways you can act quickly to help find solutions in your own neighborhood. Follow their adventures and learn how they help plants and ecosystems stay healthy.

On the Plant Heroes website, you will find materials to help you learn about plants, forest health, and ecosystem balance. The more you know, the more you can help protect plants and ecosystems in your own yard, neighborhood, and community!

Plant Heroes strives to spark curiosity about nature and science in all children. Our program provides hands-on, nature-based learning materials for educators to engage children in topics of plant health, ecosystem balance, and forest health. We also spotlight the amazing work our public gardens do in protecting the plants and ecosystems we all depend on through our website and printed materials. Visit plantheroes.org today to learn more!

Plant Heroes is brought to you by the American Public Gardens Association, founded in 1940. Over the last eight decades, the Association has supported the work of public gardens in North America and beyond. Our mission is to champion and advance public gardens as leaders, advocates, and innovators in the conservation and appreciation of plants. Our vision is "A world where public gardens are indispensable" as they provide botanic, conservation, community, education, and economic resources to their community.

The Association is committed to increasing the knowledge of public garden professionals throughout North America through information sharing, professional development, networking, public awareness, and research, so that they have the tools to effectively serve visitors and members.



**American
Public Gardens
Association**

PublicGardens.org



This publication was developed with financial support from the US Forest Service and the USDA Animal and Plant Health Inspection Service.

